

# Lot 783 Barden Ridge Road, Reedy Creek

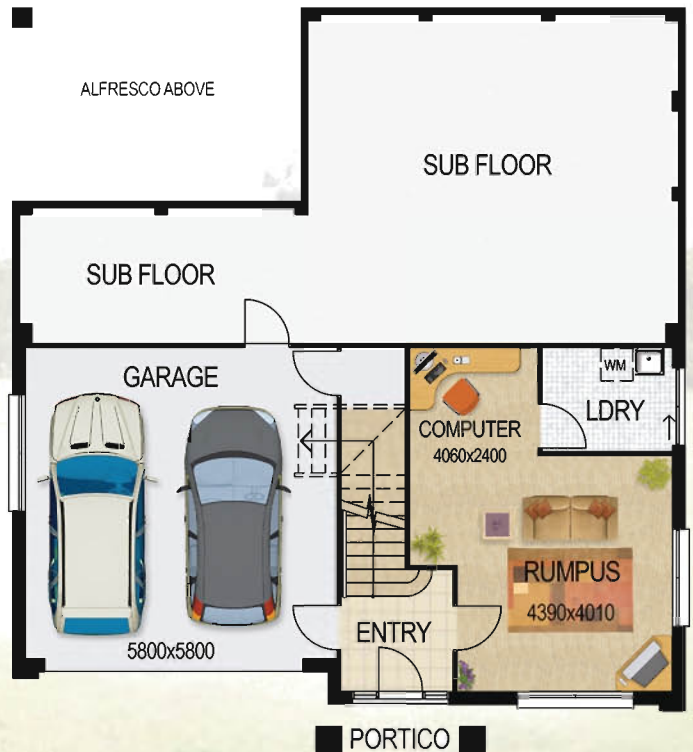
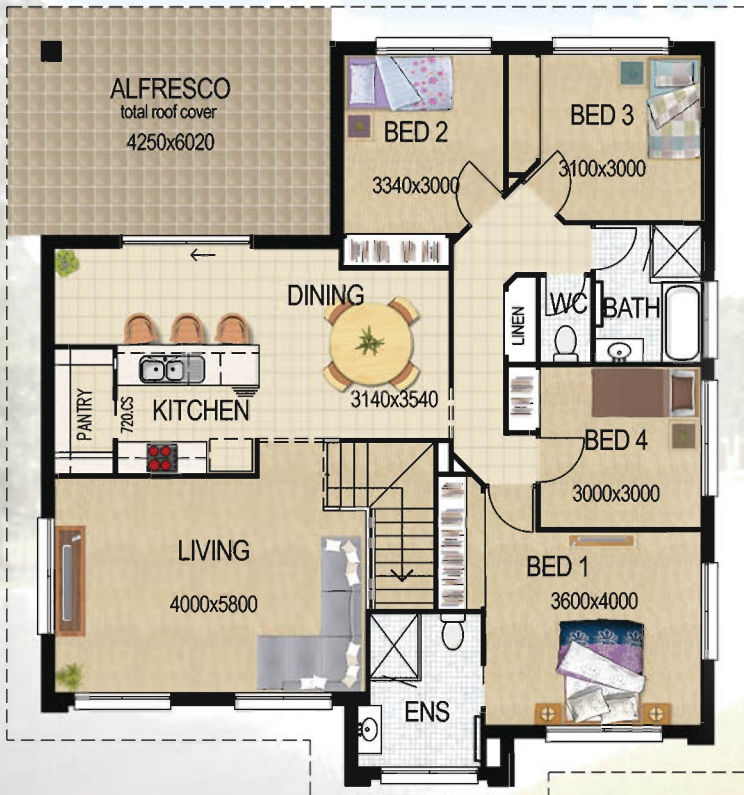


Burnett - Resort (Indicative)

## \$630,440

**Burnett 26**  
 (241.0m<sup>2</sup> or 26sq)  
 Land size: 1195m<sup>2</sup>

**Land: \$355,850**  
**House: \$274,590**



Please call one of our sales consultants on 5501 3000 for more information

\* Floor plan and elevation are for illustration purposes only.

# KEY PACKAGE FEATURES

## (The Observatory, Reedy Creek )

- ❖ **FIXED** site preparation costs including excavation, concrete piling, slab thickening, site drainage and retaining walls as required by Council and Structural Engineer.
- ❖ Treated termite resistant framing
- ❖ Granitgard termite barrier
- ❖ 5,000 Litre watertank and associated plumbing as required by Council
- ❖ Colorbond roof
- ❖ Rendered brickwork
- ❖ Alfresco under main roof with concrete paver floor
- ❖ Exposed aggregate concrete driveway and front path
- ❖ Ceiling fans to all bedrooms and living areas
- ❖ Floor coverings, including carpet and ceramic floor tiling
- ❖ Fencing allowance (\$2,500)
- ❖ Turf to front allowance (\$2,500)
- ❖ Stainless steel kitchen appliances, including fan-forced oven and ceramic cooktop
- ❖ Light fittings
- ❖ Remote control to garage door
- ❖ Letterbox
- ❖ Flyscreens and window locks to all sliding windows



*"Building on  
your land or ours"*